



Coventry and Warwickshire
Integrated Care System

Coventry and Warwickshire Palliative and End of Life Care Strategy

2024-2029

September 2023

Kathryn Drysdale & Jamie Soden –
Coventry & Warwickshire ICB



What is Palliative and End of Life Care?

- Palliative care is about improving the quality of life of anyone facing a life-limiting condition. It includes physical, emotional, social and spiritual care as well as practical support.
- Palliative and End of Life Care involves communities supported by health and social care professionals and organisations working together, to provide physical, emotional and spiritual support for the individual and those who matter to them.
- End-of-life care is the treatment, care and support for people who are nearing the end of their lives. It is an important part of palliative care and aims to help people live as comfortably as possible in their last months, weeks or days of life and to die with dignity.
- We want our people of Coventry and Warwickshire to live as well as possible for as long as possible.





- Coventry and Warwickshire Palliative and End of Life Care Strategy is a 5 year all age Strategy 2024-2029
- 5 priorities have been identified
- The Strategy will have an accompanying initial 2-year Delivery Plan and Equality Quality Impact Assessment
- On-going co-production with a systemwide engagement June - July 2023

Our Priorities: What we want to do

1. Provide **information** which focuses on identification, early intervention and support for people with palliative and end of life care needs.
2. **Access** to timely palliative and end of life care with support throughout, for all of our diverse communities.
3. **Support** people diagnosed with a life limiting condition and those who matter to them, carers and communities.
4. **Improve** the quality of personalised care and support planning for people with palliative care needs, including planning for the end of life, through education and training for all.
5. Deliver a **sustainable** system of integrated palliative and end of life care.



The National Framework: Ambitions for Palliative and End of Life Care

To support people to plan and consider wishes and preferences for their end-of-life care and treatment, we have a national framework to support the delivery of care: Ambitions for Palliative and End of Life Care.

The Ambitions Framework sets out 6 key areas of focus:

01 Each person is seen as an individual

02 Each person gets fair access to care

03 Maximising comfort and wellbeing

04 Care is coordinated

05 All staff are prepared to care

06 Each community is prepared to help



How the strategy was developed: Engagement



We **co-produced** this strategy speaking to the people of Coventry & Warwickshire:

- Those diagnosed with a life limiting condition
- Their carers and loved ones
- People who had been bereaved



We held a full engagement on the draft strategy between **June-July 2023** and produced a 'You Said We Did Report' main themes identified:

- Language & Layout
- Workforce Mapping
- Access to services



We **engaged** with stakeholders from across Coventry & Warwickshire, including NHS providers, councils, community leaders & third sector providers



We held a series of **meetings, group discussions and surveys** where we discussed:

- What matters most
- Challenges and Opportunities
- Priorities

Engagement



We reached out to:

Over

1,600
people

including patients, the public, health, social and third sector professionals.

Over

300
organisations

across Coventry and Warwickshire.

We directly spoke with:

Over

30
different community

groups and health and social care organisations via face to face or small group meetings.

A series of public and stakeholder surveys have been completed with a total of

239
responses

from across the system

Health Inequalities in Coventry and Warwickshire

Actions we will take to promote Health Equity in Palliative and End of Life Care

We value the importance of fair access to care for our differing Communities.

We are determined to take actions to reduce health inequalities being experienced by our most vulnerable people.

We have identified the challenges we want to tackle and the actions we will take in all of our work across all ages to enable this to happen.



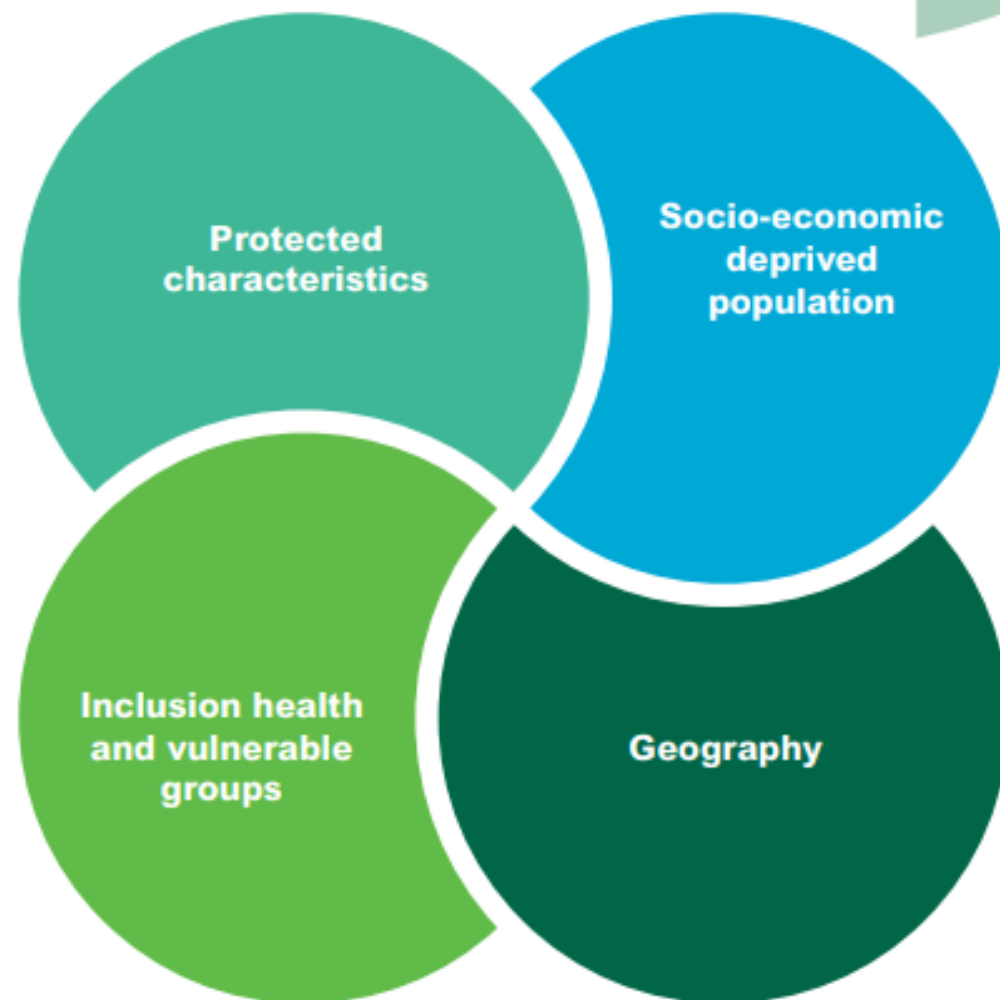
Health inequalities are unfair differences in health between our community groups.

In Coventry and Warwickshire these differences result in some of our communities having poorer access to information, appropriate services and planning for end-of-life care.

Our aim is to provide fair access for all our diverse communities.

We have identified greater differences in access to palliative and care at the end of life for:

- Asylum Seeker and Migrant communities
- Looked After Children
- People diagnosed with Dementia
- Ethnic Minority communities
- Gypsy, Roma and Traveller communities
- Homeless communities
- Learning Disability communities
- LGBTQIA+ communities
- People diagnosed with severe Mental Health challenges
- Prison communities



How we will deliver improvement

Through the Strategy and Delivery Plan, we are aiming to provide palliative and end of life care in the following ways:

- Care seamlessly co-ordinated across settings with clear communication and referral pathways.
- Pro-active personalised care and support planning for care at the end of life.
- Collaborative approach across health and social care for those with palliative and end of life care needs.
- Clear communication with the individual and those important to them.



Programmes
through which we
will work:



Care Collaboratives



Community Integrator Model



Warwickshire Community Reablement
Service



Coventry Improving Lives



Continuing Health Care Fast Track Review

Palliative and End of Life Care Strategy

2024-2029

Delivery Plan:
January 2024 - December 2026



Delivery Plan: Overview

Key priorities

1. Provide **information** which focuses on identification, early intervention and support for people with palliative and end of life care needs.



Areas of focus

- Ensure up to date information for PEOLC services, referral pathways and support options are available to patients, professionals and the public.
- Pathway Reviews:
 - Continuing HealthCare Fast Track
 - Early Identification
 - Transition from children and young people's services to adult services
- Identify work streams across the system which dovetail into PEOLC
- Improve availability of data regarding palliative and end of life care

Key priorities

2. **Access** to timely palliative and end of life care with support throughout, for all of our diverse communities.



Areas of focus

- Identification of underserved communities
- Pathway Reviews:
 - 24/7 access to care
 - Psychological Therapy
 - Bereavement
 - Personal Health Budgets
- Access to medication workstream
- Review of support for emotional and spiritual as well as practical living needs.

3. **Support** people diagnosed with a life limiting condition and those who matter to them, carers and communities.



- Personalised Care & Support Planning to include
 - Advance Care Planning Review:
 - Documentation
 - Systemwide communication
- Pathway Reviews:
 - Unpaid Carer Support
 - Children & Young People: Sibling and Friend Support
- Poverty Proofing Workstream

Key priorities

4. **Improve** the quality of personalised care and support planning for people with palliative care needs, including planning for the end of life, through education and training for all.



Areas of focus

- Development of an Education & Training Framework for Palliative and End of Life Care
- Dying Matters: a systemwide approach to awareness raising

5. Deliver a **sustainable** system



- A comprehensive systemwide review of workforce, pathways, roles and responsibilities.
- Integrated Commissioning Model: contracts and funding review.

Remaining timeline for the strategy

Governance


Completion of 2023 Action Plan

Sep.–Dec. 2023

Jan. 2024

Launch of Strategy

Commencement of Delivery Plan 2024-6



Thank you for your time.
Any questions?